

# WHEEL TABLE

CODE: RET104

## PRODUCT DESCRIPTION

An elegantly designed collaborative style student table. Ideal for modern style classroom. Configure the six Wheel Table desks for group learning or separate for independent work. Pair with our student chairs to complete your classroom. Built by Batger.



## OPTIONS

- \*Other fixed heights available
- Height adjustable legs (545mm to 750mm)
- Wide range of table top colours (see House Colours)
- Writable Top (Wilsonart Markerboard / Laminex Diamond Gloss)
- Frame colour (See House Colours)
- Lockable castors
- Custom sizes
- Compact laminate top

## COMPOSITION

- 18mm Laminate top (Laminex E0 board)
- 35 x 20mm steel frame (square tube)
- 38mm round steel tube legs



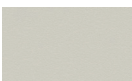
## SPECIFICATIONS

W900 D780 H720\* or Adjustable (545 - 750)  
6 TABLES W1800 D1800 H720

## Core Range



Curly Birch



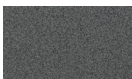
Oyster Grey



Steel Blue

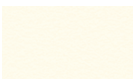


White



Greystone

## Premium Range



Parchment



Raw Birchply



Young Beech



Classic Oak



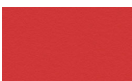
Elegant Oak



Coastal Sunrise



Olivine



Pillarbox



Morrocan Clay



Fossil



Portsea



French Navy



Tornado



Charcoal



Black

## FRAME COLOURS



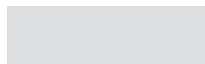
Black (Default)



Charcoal



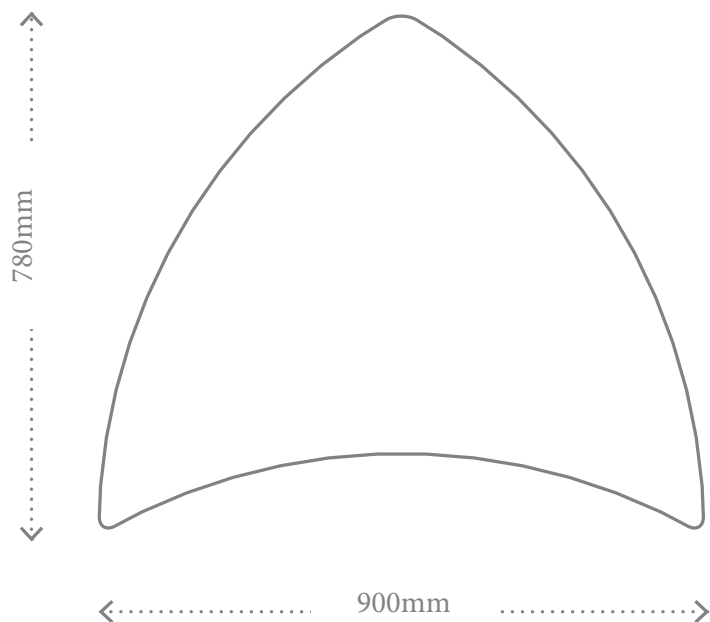
White



APO Grey

# WHEEL TABLE

CODE: RET104



**6 TABLES W1800 D1800 H720**