

FIXED SCIENCE DEMONSTRATION BENCH
REB48

PRODUCT DESCRIPTION

A robust demonstration bench designed and built by Batger to meet NSW DET standards. Constructed from 18mm Laminex E0 board with a 25mm moisture-resistant benchtop, it features a stainless steel sink, heat tile, three lockable doors, and four drawers for ample storage. Optional compact laminate top and castors available for added durability and mobility.



HANDLE OPTIONS



D Handle



Education Handle*



Bow Handle

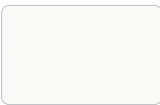


Knob (chrome)

* Default unless specified

SPECIFICATIONS
W2020 D700 H865

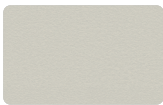
Laminate - Core



White



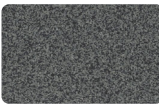
Curly Birch



Oyster Grey



Steel Blue^



Greystone*^

Laminate - Premium*



Parchment



Raw Birchply



Young Beech



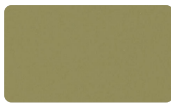
Classic Oak



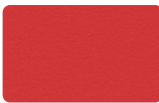
Elegant Oak



Coastal Sunrise*



Olivine



Pillarbox*



Moroccan Clay



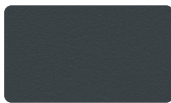
Fossil



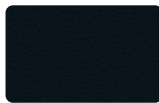
Portsea*



Tornado



Charcoal



Black

All board used is Australian sourced, E0 and Green Tag certified.

*Premiums may apply when used for cabinetry.

^Not available in compact laminate.



BATGER